

OVO³

Clinically Proven Speed

190s from Start to Send to Lab



High
Quality
Dental
Solutions

 **OnexDental**
— TECHNOLOGY —

3DISC

So Fast: Speed Your Clinic Can Feel

Full Arch Scans in 190s from Start to Send to Lab in Real-Life Practice*

100% MADE IN USA

All OVO³ products are 100% made in the United States. Manufactured in Herndon, VA, they combine the durability of American engineering with the precision standards of European design.

Up to 25% faster

The average full workflow is 190 seconds, measured from scan start to final export in real clinical conditions; even with untrained operators.

Consistent Performance

OVO³ offers consistent performance across all patient profiles, including complex occlusions, gag reflex sensitivity, pediatric, and geriatric cases.

Personal Onboarding

With a dedicated team of clinical specialists, we offer an absolutely customized onboarding process. Schedule your personalized training sessions the moment you unbox your OVO³.

Life-like Colors

Our 10-Bit architecture delivers natural image quality and excellent visibility of the marginal line, enhancing diagnostic precision.

Fly AI

Fly AI is a groundbreaking upgrade to 3DiscClinic transforming how data seamlessly comes together. Fly AI is designed to automatically detect soft tissue and foreign objects like gloves.

Smooth scanning at 70 FPS

Our state-of-the-art optical core combined with our innovative & intuitive software ensures uninterrupted motion capture and a stable clinical experience at 70 frames per second.



Incredibly Ergonomic

Only 190g with rotative tip (360°)



So Fluid: Precision, Smoothness & AI-Assisted Clarity You Can See

Experience next-generation digital scanning with latest Sensor Technology, delivering 4X higher resolution and advanced 10-bit architecture for exceptional surface detail and color accuracy.

At 190 g, with a 360° rotative tip, the scanner provides perfect control in any position. A USB-C to USB-C connection ensures stability, complemented by the redesigned 3DISC Clinic Software for real-time visualization and optimized efficiency.

With the customizable Button UI, clinicians can start, pause, or resume scans instantly, no keyboard or mouse needed; streamlining hygiene and workflow.

The new optical engine offers a 20 mm scan depth for precise capture of reflective and subgingival areas, while the upgraded electronic board ensures faster, smoother full-arch scans.



Scan the QR code to learn more about OVO³ or visit:

3disc.com/ovo3

Perfectly connected

USB-C to USB-C



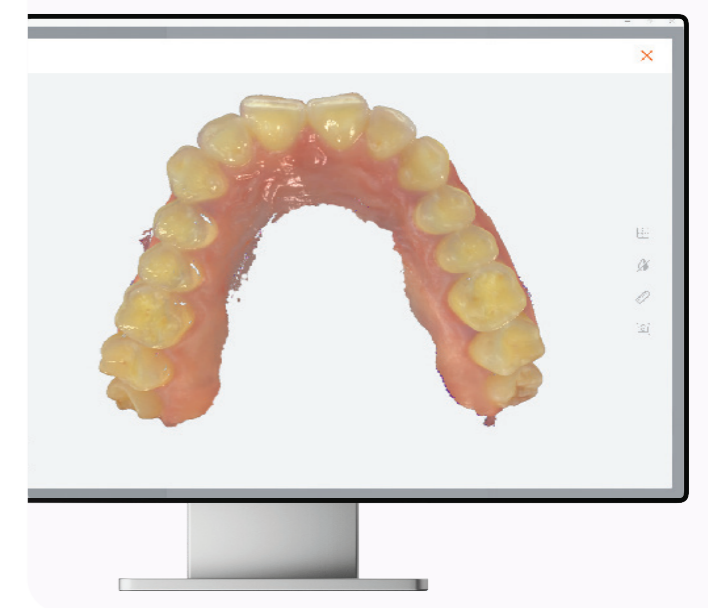
Customizable Button UI

Single-Hand Operation & Improved Hygiene



Latest Sensor Technology

10-Bit Architecture



So Simple: A Simplified User Experience Powered by AI



3DiscClinic

Vibrant & Natural Colors

With a comprehensive set of digital tools, 3DiscClinic guides the dentist through an optimal impression taking process, ensuring patient comfort and precision restorations, from simple cases to the most complex. Customizable button functions let you tailor the process to your workflow, while the redesigned user interface provides a **100% clinical experience**. Combined with OVO3's **10-Bit architecture**, 3DISC's advanced optical imaging technology delivers vibrant & natural colors.



Quality Map



Measurement Tool



Model Builder



Occlusal Clearance



Cross Section Tool



Undercut Tool

Guided Pre-OP Workflow:

A structured sequence ensures accurate bite acquisition and alignment for consistent prosthetic results.

Optimized Scan-Body Workflow:

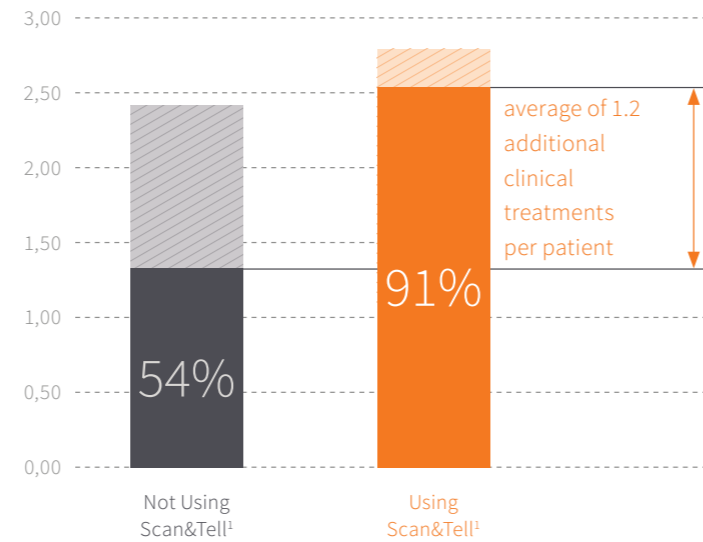
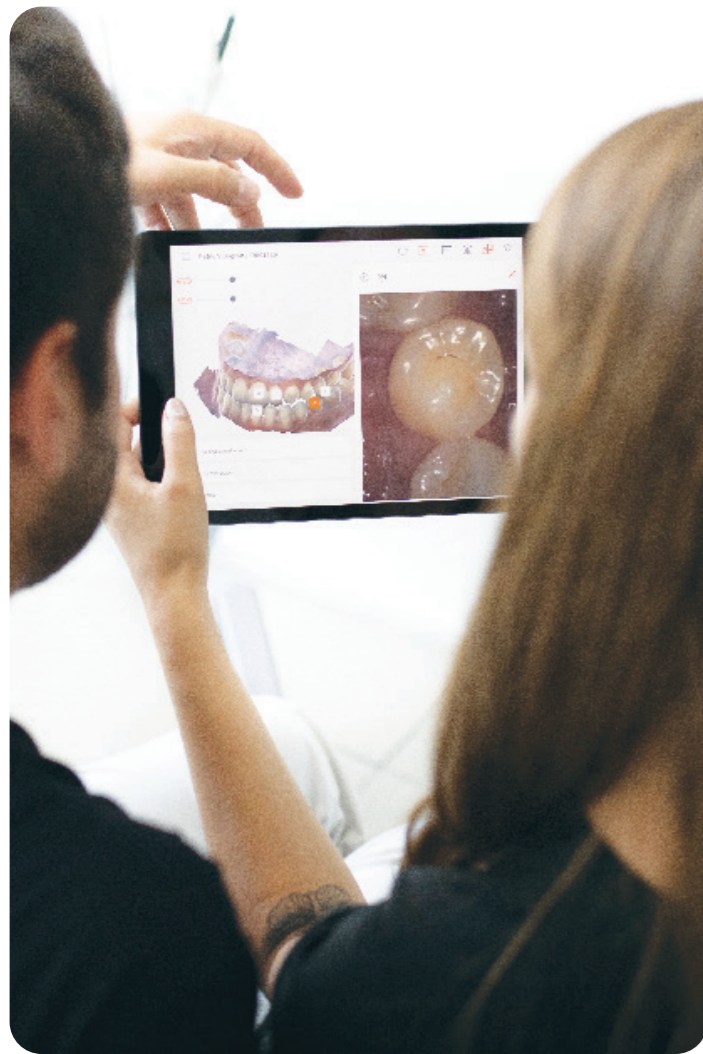
Faster scanning of scan-bodies and emergence profiles, even post-surgery, improving precision around implants.

Streamlined User Interface:

All review tools (margin line, cross-section, etc.) are now available directly within the 3D view through fewer clicks, smoother planning.

Visual Guidance:

Built-in cues and step-by-step direction help new users achieve full, high-quality scans with less training.



	Not Using Scan&Tell	Using Scan&Tell
Average number of clinical issues detected	2,4	2,8
Number of accepted treatments	1,3	2,5

Average number of clinical issues detected
 Number of accepted treatments

¹ A statistically significant result was determined with a p-value less than 0.05.

The study is currently being replicated with 557 patients at Biruni University, Faculty of Dentistry.

The Next Evolution: Scan&Tell AI

Clinical insight, Artificial intelligence, Real results.

*Scan&Tell AI introduces AI-assisted diagnostic insight directly into your scans with 1 click per indication.**

- AI-assisted detection of multiple oral conditions for early and confident clinical assessment.
- Visual insights that support diagnosis and enhance patient understanding.
- Shareable reports that strengthen patient communication and treatment acceptance.
- Refreshed UI/UX ensures a seamless experience within the 3DISC Clinic environment.

Scan&Tell | 1.2 Additional Treatments

A revolutionary 3D & 2D interactive experience.

A patient that sees, agrees.

Scan&Tell enables visual, real-time patient communication, allowing them to see their oral condition and understand their treatment plan. This visual interaction builds trust and leads to higher treatment acceptance across all clinical scenarios.

The Scan&Tell platform unlocks the potential of 1.2 additional treatments per patient.*

Internal Study

We have conducted an internal study that assesses the medical benefits of incorporating Scan&Tell into dental practices with a specific focus on evaluating its **impact on patient communication, engagement and the increase in the number accepted treatments.**



Scan the QR code to learn more about Scan&Tell or visit:

3disc.com/scan-and-tell



*Coming soon — feature currently under clinical evaluation.

“We strive to give the best user experience”

Group Customer Success

3DISC Support

Our customer support team, available by phone or email, can access your acquisition PC remotely for a more efficient and effective support experience.

3DiscCloud

- Streamlined cases submission
- Sleek overview of cases and follow up
- Interactive messaging and discussion
- Available for all users and partners (labs)



No Annual Fees

A one-time, all-inclusive payment. No additional licensing or case fees, plus FREE software updates.

Personalized Onboarding

With a dedicated team of clinical specialists, we offer an absolutely customized onboarding process. Schedule your personalized training sessions the moment you unbox your OVO³.

3DISC Support

E-Mail: support@3disc.com

From 9:00 am to 6:00 pm CET
Phone: +33 1 86 65 68 93

From 9:00 am to 6:00 pm
UTC-4

Performance & Technology Focus

Every Detail Engineered for Clinical Excellence

FEATURES	SPECIFICATIONS
Sensor Technology:	Hybrid Stereo Camera system with structured light
Sensor Resolution:	2.5MP
Color depth:	10-Bit
Frames Per Second:	70 FPS
Scan Depth:	20mm
Fly AI Soft Tissue Removal:	✓
Full Arch Case Scan:	190 seconds
Quadrant Scan:	120 seconds
Smart Button:	✓
Ortho Simulator:	✓
Scan&Tell:	✓
Scan&Tell AI:	Coming soon.
Weight (including tip):	190g
Tip Rotation:	360°
Connectivity:	USB-C to USB-C
Software:	3DiscClinic & 3DiscLab
Export Formats:	STL, OBJ, PLY
Warranty:	2 Years
Made in:	USA

Every lab can work with your files!

exocad

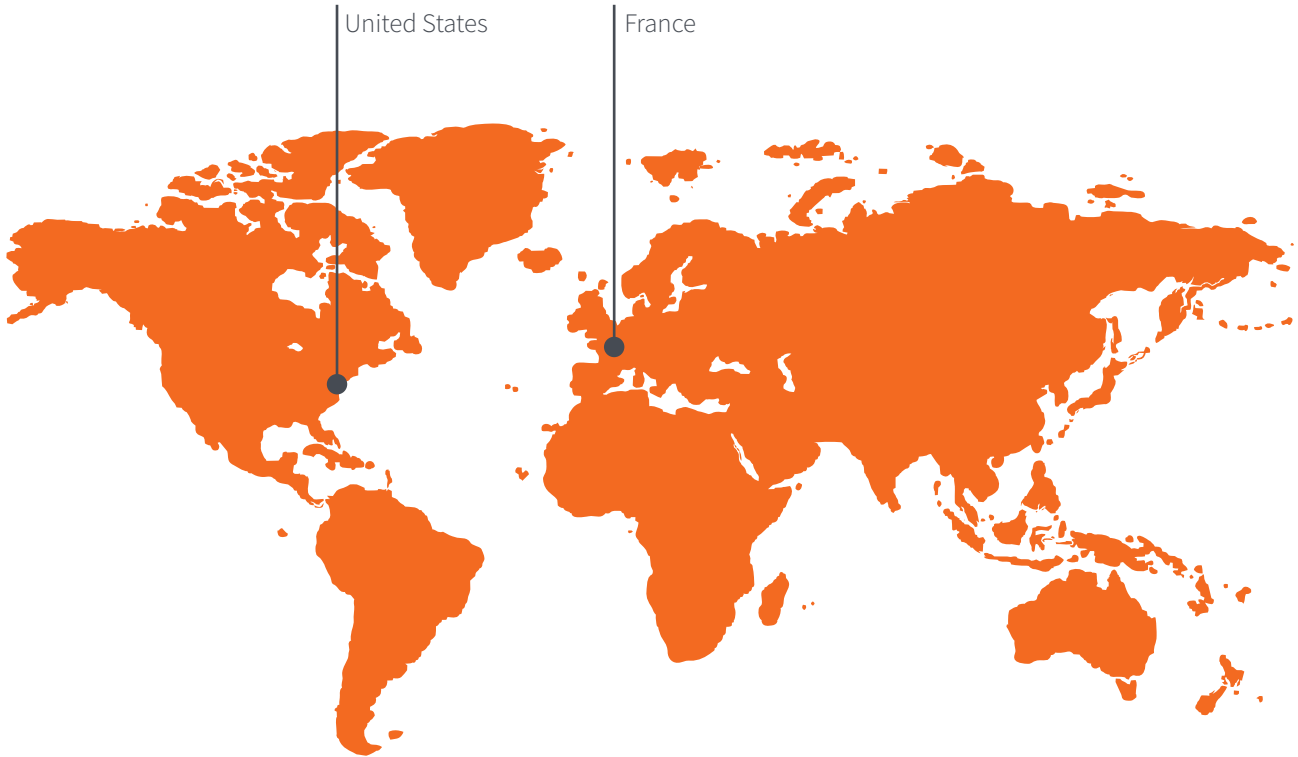
3shape

formlabs

3DISC, a global company dedicated to bringing the simplest and best IOS to dentists worldwide.

3DISC is a privately-owned company with offices in the United States and France. Our dedicated team consists of digital experts from a wide range of high-tech fields, all working together towards a single goal:

To revolutionize the future of digital dentistry. Our primary goal is to go beyond the conventional limits of digital technology by providing inclusive solutions that offer significant clinical advantages, with a particular focus on intraoral scanners.



3DISC Taking Digital Beyond

3DISC
365 Herndon Pkwy #18 Herndon,
VA 20170, USA

3DISC Dental Connect
1 place de la Pyramide
92 800 Puteaux - France

+1 800 570 0363
info@3disc.com
sales@3disc.com

 **OnexDental**
— TECHNOLOGY —

Onex Dental Tic. Ltd. Şti.
19 Mayıs Mah. Büyükdere Cad.
Gümülcineli Apt. 16/9 34363 Şişli -İST.

☎ +90 (212) 231 03 20 - 231 03 26
✉ info@onexdental.com
www.onexdental.com

**High
Quality
Dental
Solutions**