

# W2P

## SOLFLEX 170



Ideal for chairside solutions!



**Dimensions:** 12.52 × 11.65 × 22.05 in  
**Maschinengröße:** 318 × 296 × 560 mm

**Print Volume:** 2.20 × 3.50 × 4.72 in\*  
**Bauvolumen:** 56 × 89 × 120 mm\*

**Layer Thickness:** 0.001–0.008 in  
**Schichtdicke:** 25–200 µm

**Pixel Size:** 0.0028 in\*  
**Pixelgröße:** 70 µm\*

**Technology:** UV-LED DLP®,  
Wavelength: 385 nm  
**Technologie:** UV-LED DLP®,  
Wellenlänge: 385 nm

**Weight:** approx. 33 lbs  
**Gewicht:** ≈ 15 kg

**Operating Temperature:** 64–82° F  
**Umfeldtemperatur:** 18–28° C

**Power Requirements:** 100–240 V,  
50/60 Hz, 80 W  
**Netzanforderung:** 100–240 V,  
50/60 Hz, 80 W

**Building Speed:** 4.72 in/hr\*\*  
**Baugeschwindigkeit:** 120 mm/Std.\*\*



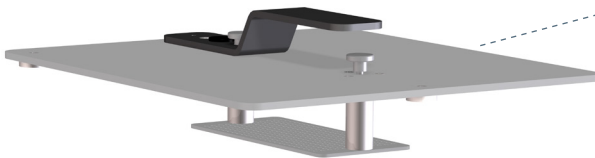
Vat Deflection Feedback System  
saves up to 40% of manufacturing time

\* Pixel Size and Print Volume may vary/Pixelgröße und Bauvolumen können geringfügig abweichen

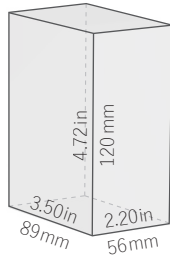
\*\* Layer Thickness: 200 µm, BuildStyle: Normal/Schichtdicke: 200 µm, BuildStyle: Normal

# W2P

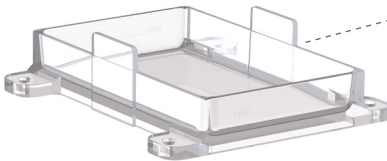
## SOLFLEX 170



Building Platform/  
Bauplattform



Print Volume/  
Bauvolumen



FlexVat®

**W2P Engineering GmbH**

Am Campus 1  
3400 Klosterneuburg | Austria  
[www.way2production.at](http://www.way2production.at)

**Contact**

Phone: +43 (0) 1 306 28 57

E-Mail: [office@way2production.at](mailto:office@way2production.at)